

From Preparation to Presentation

we have the foodservice solutions
designed to deliver five-star service
for you and your guests.



Hotel/Resort Serving Solutions



Providing Solutions for over 75 Years
Every Ware. Every Day.



SERVING SOLUTIONS FOR HOTEL & RESORT INDUSTRIES

Compliance and convenience are equally important factors in hotel applications. Our product offering in this brochure are focused on enhancing the food service operator and patron's experience. TableCraft will continue to search for opportunities to bring quality and dependable products that always promote food safety in the prep, storage and service.

Elegant styling



NEW

RIDGE COLLECTION™ SERVING PLATES & BOWLS

Whether its for a special occasion or enhancing your tabletop, these Ridge Collection plates and bowls resemble ceramic serving pieces with a high gloss textured finish. However, they offer the durability of melamine while still providing elegance to your tabletop.

- Melamine—easy to clean, dishwasher safe
- Heat safe up to 212°F



Item #	Description	Min Order
RIDGE COLLECTION™—MELAMINE, WHITE, HIGH GLOSS FINISH		
SERVING PLATE		
a.	11862 ▶ 7½" dia x ¾"	1 ea
b.	11863 ▶ 9" dia x ¾"	1 ea
c.	11864 ▶ 11" dia x ¾"	1 ea
SERVING BOWL		
d.	11865 ▶ 24 oz, 9" dia x 2"	1 ea
e.	11866 ▶ 48 oz, 11" dia x 2¼"	1 ea

See our Ridge Collection™
Serving Platters on page 68-69
of our catalog





Sugar Jar with Lid is perfect to store and serve loose sugar or for holding sugar tubes

Salt & Pepper Shaker (set of 2) feature a one piece construction with rubber stoppers for easy cleaning and refilling



Creamer and Sugar Packet Holder are beautiful additions to keep your tabletop clean and organized

PULITO COLLECTION™

Elevate your tabletop setting with our exclusively designed Pulito Collection™. Designed to resemble beautifully unique hand thrown ceramic pieces and constructed of dishwasher safe melamine, this assortment adds subtle elegance and durability to your tablescape.

- Natural white “porcelain” color is neutral to match any décor
- Durable melamine construction
- Safe for temperatures up to 212°F
- Easy to clean, dishwasher safe

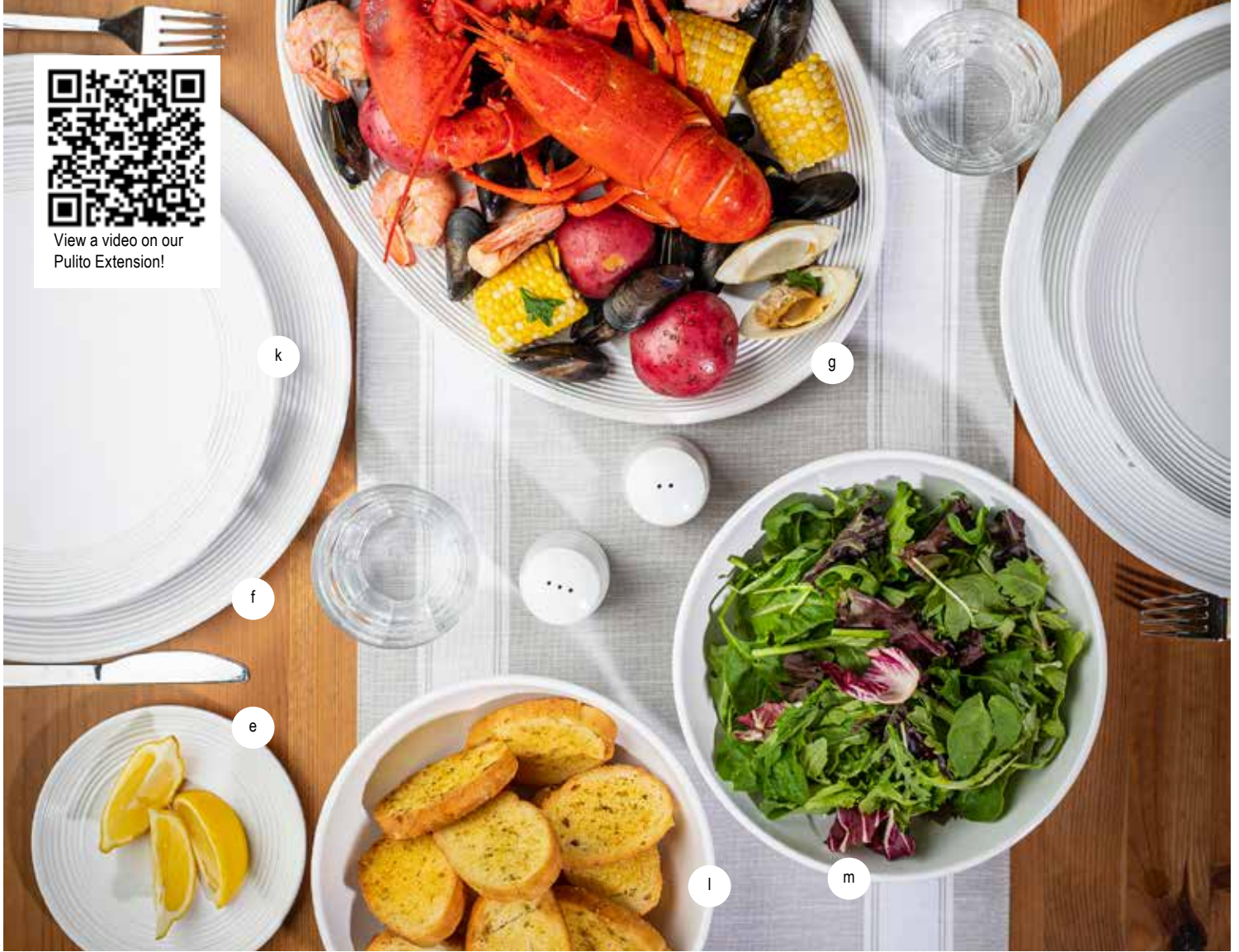


Item #	Description	Capacity	Min Order
PULITO COLLECTION™-MELAMINE, WHITE TEXTURED FINISH			
a. 10413	Salt & Pepper Shakers, 2" dia x 3 3/8"	1 1/4 oz	6 sets
b. 10414	Creamer, 4 3/8 x 3 x 3 3/8"	5 oz	12 ea
c. 10415	Sugar Packet Holder, 4 x 3 1/4 x 2"	–	12 ea
d. 10416	Sugar Jar with Lid, 3" dia x 4 1/8"	5 1/2 oz	12 ea





View a video on our Pulito Extension!



NEW

Running **circles** around the rest



Unique lines texture the exterior



Item #	Description	Capacity	Min Order
PULITO COLLECTION™ ADDITIONS—MELAMINE, WHITE, TEXTURED FINISH			
e.	10515 Side Plate, 6" dia x 5/8"	—	1 ea
f.	10496 Round Platter, 13 7/8" dia x 1"	—	1 ea
g.	11146 Oval Platter, 15 x 11 1/4 x 7/8"	—	1 ea
h.	123460 Wide Rim Bowl, 10" dia x 2 3/8"	14 oz	1 ea
i.	11147 Wide Rim Bowl, 12" dia x 2 3/8"	28 oz	1 ea
j.	11514 ▶ Round Plate, 9 dia x 1"	—	1 ea
k.	11148 Round Plate, 10 1/2" dia x 7/8"	—	1 ea
l.	11149 Round Coupe Bowl, 8 1/2" dia x 2 3/8"	24 oz	1 ea
m.	11150 Round Coupe Bowl, 9 1/4" dia x 3"	48 oz	1 ea

b



c



d



a



e

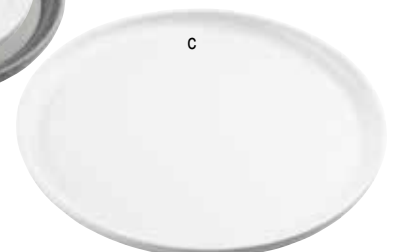
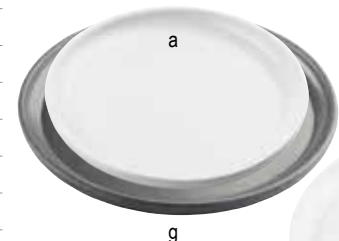


NEW

TERRA COLLECTION™ SERVING PLATES & BOWLS

Our Terra Collection will easily refresh your tablescape while offering a durable but stylish solution for serving appetizers, entrees, and desserts.

- Matte finish available in white or gray with speckles
- Safe for temperatures up to 212°F
- Easy to clean, dishwasher safe



Item #	Description	Min Order
TERRA COLLECTION™-MELAMINE, WHITE		
SERVING PLATE		
a. 11803 ▶	7½" dia x ¾"	1 ea
b. 11804 ▶	9" dia x ¾"	1 ea
c. 11805 ▶	11" dia x ¾"	1 ea
SERVING BOWL		
d. 11806 ▶	24 oz, 9" dia x 2"	1 ea
e. 11807 ▶	48 oz, 11" dia x 2¼"	1 ea
TERRA COLLECTION™-MELAMINE, GRAY WITH SPECKLES		
SERVING PLATE		
f. 11808 ▶	7½" dia x ¾"	1 ea
g. 11809 ▶	9" dia x ¾"	1 ea
h. 11810 ▶	11" dia x ¾"	1 ea
SERVING BOWL		
i. 11811 ▶	24 oz, 9" dia x 2"	1 ea
j. 11812 ▶	48 oz, 11" dia x 2¼"	1 ea





NEW



a - c



d / c

Artisan-inspired,
durable melamine

RIDGE COLLECTION™ SERVING PLATTERS

Whether its for a special occasion or enhancing your buffet serving line, these Ridge Collection™ platters resemble ceramic serving pieces with a high gloss textured finish. However, they offer the durability of melamine that will upgrade your next event or buffet service.

- Melamine—easy to clean, dishwasher safe
- Heat safe up to 212°F



Item #	Description	Min Order
RIDGE COLLECTION™ SERVING PLATTERS—MELAMINE, WHITE, HIGH GLOSS FINISH		
a.	11772 ▶ Rectangular, 13 x 8 x 1"	1 ea
b.	11773 ▶ Rectangular, 17 x 11 x 1"	1 ea
c.	11774 ▶ Rectangular, 21 x 13 x 1"	1 ea
d.	11775 ▶ Square, 14 x 14 x 1"	1 ea
e.	11776 ▶ Square, 16 x 16 x 1"	1 ea



NEW

MELAMINE SHEET PANS

Sheet Pans designed to have the look of enamelware but with the durability of melamine. The white color with black rims bring timeless style to your tablecape. Great for serving appetizers, entrees, and desserts.

- Unique matte finish on outside with glossy finish inside
- Safe for temperatures up to 212°F
- Easy to clean, dishwasher safe



Item #	Description	Min Order
SHEET PANS—MELAMINE, WHITE DECALED WITH BLACK RIM		
a.	11669 ▶ Fourth Size, 13 x 9½ x 1½"	1 ea
b.	11671 ▶ Eighth Size, 10½ x 6 x 1½"	1 ea

Shatterproof and scratch-resistant melamine offers worry-free dining experiences both indoors and outdoors. It is a durable and convenient option for those looking for a practical and stylish alternative to traditional enamelware



EUROPA COLLECTION™ SERVING PLATTERS, BOWLS & PLATES

Get the look of artisanal stoneware with the durability of melamine with our Europa Collection™. This line features a neutral, deglazed white ceramic style. Bowls and plates feature an irregular rim shape to more perfectly resemble authentic ceramic serving pieces.

- Perfect for indoor and outdoor serving
- Unique matte finish with beige rim and textured pattern resembles upscale ceramic pieces
- Platters are great for entrees or larger portions for buffet/catering
- Platters available in 10¾", 14", 16" and 18" diameters
- Melamine—easy to clean, dishwasher safe



Item #	Description	Min Order
EUROPA COLLECTION™ –MELAMINE, WHITE STONE PATTERN WITH BEIGE RIM		
ROUND PLATTER		
a.	123515W 10¾" dia x 7/8"	1 ea
b.	123517W 14" dia x 7/8"	1 ea
c.	123518W 16" dia x 7/8"	1 ea
d.	123519W 18" dia x 7/8"	1 ea
BOWL		
e.	10965 13 oz, 6¾ x 5 x 3¾"	1 ea
f.	10966 30 oz, 9 x 6 x 3¾"	1 ea
PLATE		
g.	11515 ▶ 7 x 6 x 7/8"	1 ea
h.	11516 ▶ 9 x 7¾ x 1"	1 ea
i.	10967 10½ x 9 x 1½"	1 ea
j.	10968 13¼ x 11½ x 1¼"	1 ea

Artisan aesthetics



NEW

LUNARA COLLECTION™ SERVING PLATTERS, PLATES & BOWLS

Enhance the look of your serving presentation with our Lunara Collection™! Our bowls and plates feature an irregular rim shape, to perfectly resemble authentic ceramic serving pieces, but with the durability of melamine; perfect for indoor and outdoor serving.

- Range of items are perfect for serving entrees or even larger portions for buffet or catering—available in diameters: 10¾, 14, 16 and 18"
- Unique matte finish with copper flecks and textured pattern resembles upscale ceramic pieces
- Smallest bowl (10888) features a 3½ oz capacity, perfect for sauce and dressing serving



Item #	Description	Min Order
LUNARA COLLECTION™ -MELAMINE, BROWN WITH COPPER FLECKS		
ROUND PLATTER		
a.	123515BR 10¾" dia x ¾"	1 ea
b.	123517BR 14" dia x ¾"	1 ea
c.	123518BR 16" dia x ¾"	1 ea
d.	123519BR 18" dia x ¾"	1 ea
BOWL		
e.	10888 3½ oz, 4 x 2¾ x 2⅝"	1 ea
f.	10889 13 oz, 6⅝ x 5 x 3¼"	1 ea
g.	10890 30 oz, 9 x 6 x 3⅝"	1 ea
PLATE		
h.	11517 ▶ 7 x 6 x ⅞"	1 ea
i.	11518 ▶ 9 x 7¼ x 1"	1 ea
j.	10891 10½ x 9 x 1⅝"	1 ea
k.	10892 13¼ x 11¼ x 1¼"	1 ea



Textured pattern resembles upscale ceramic pieces that can be dressed up or down; these pieces are great for casual dining or upscale tabletop settings.



a



View a video on the benefits of our Frostone Collection™ Slate Paddles!

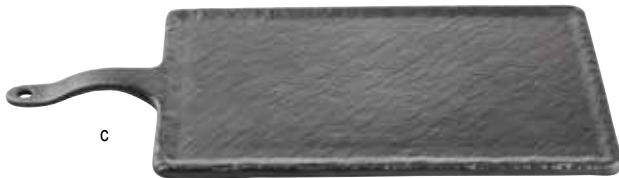


f

See our full Frostone Slate Collection™ on pages 70 & 71 of our catalog



b



c



d



e

FROSTONE SLATE COLLECTION™ PADDLES

- Offset handle makes serving and table placement easier
- Raised lip helps keep food in place



Item #	Description	Min Order
FROSTONE SLATE COLLECTION™ PADDLES—MELAMINE		
a.	MSP3618 Black Small, 9¾ x 7"-4½" Handle	1 ea
b.	11496 White Small, 9¾ x 7"-4½" Handle	1 ea
c.	MSP4520 Black Medium, 13 x 8¾"-4¾" Handle	1 ea
d.	11497 White Medium, 13 x 8¾"-4¾" Handle	1 ea
e.	MSP5120 Black Large, 15¾ x 7¾"-5" Handle	1 ea
f.	11498 White Large, 15¾ x 7¾"-5" Handle	1 ea



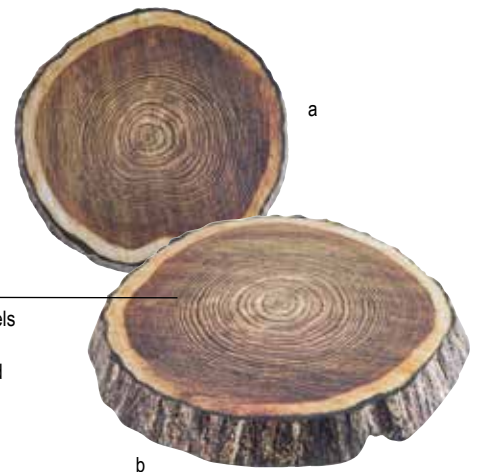
LINDENWOOD COLLECTION™

Add an earthy elegant look to your table or buffet with TableCraft's Lindenwood Collection. This range features the look of natural wood with the durability and cleanability of melamine. Natural tones create a unique palette for food presentation.

- Great for serving meat and cheese boards, entrees, desserts and more
- Raised display design adds height and dimension to your setting, while the integrated cut-out makes it easier to place on the table



Three platter sizes to choose from



Growth ring channels and decoration to resemble real wood

b

Item #	Description	Min Order
LINDENWOOD COLLECTION™-MELAMINE		
a. 10253	Platter, 9 3/8" dia x 1 1/8"	1 ea
b. 10254	Platter, 11" dia x 1 1/8"	1 ea
c. 10255	Platter, 13" dia x 1 1/8"	1 ea

c

Integrated finger lift allows server to place or remove platter easily



Mediterranean meets melamine

MELAMINE OLIVE WOOD SERVING PADDLES

Our Melamine Olive Wood Decal Serving Paddles are perfect for serving indoors and outdoors due to their durability. Their olive wood decal gives a more casual but rustic look.

- Olive wood decal
- Durable, lightweight melamine
- Easy to clean, dishwasher safe



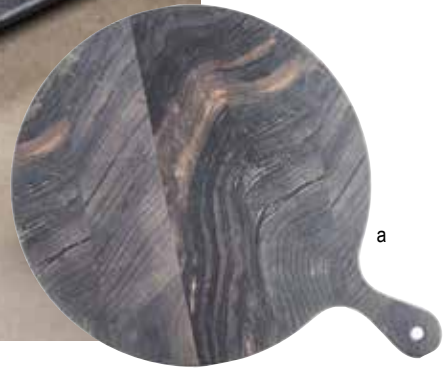
Item #	Description	Min Order
SERVING BOARDS-MELAMINE, OLIVE WOOD DECAL, BLACK		
a.	11182 Rectangular Paddle, 12 x 7" (4½" Handle)	1 ea
b.	11183 Round Paddle, 10" dia x ¾" (3¾" Handle)	1 ea
c.	11184 Round Paddle, 12" dia x ¾" (3¾" Handle)	1 ea



View a video on the benefits of our Melamine Olive Wood Serving Paddles!



TableCraft offers stylish, timeless display and serving options to update and elevate buffet, banquet and catering operations. Our lines continue to evolve and expand to accommodate functional needs and support dining trends.



BARNWOOD COLLECTION™

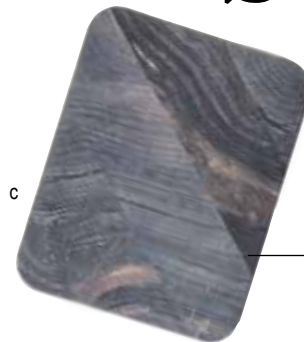
Enhance your casual dining experience with our melamine buffet and serving collection with exclusive "barnwood" pattern.

- Ideal for rustic buffets, farm-to-table restaurants or pool side meals
- Durable, lightweight melamine
- Available in a variety of shapes & sizes
- Easy to clean, dishwasher safe



From **barn**
to **buffet**

Item	Description	Min Order
PADDLES, TRAYS & PLATTERS—MELAMINE		
a.	10016 Round Paddle 12½" dia, 16½" with Handle	1 ea
b.	10017 Rectangular Paddle 8 x 10", 12" with Handle	1 ea
c.	10018 Rectangular Tray 10 x 7¾"	1 ea
d.	10019 Rectangular Tray 11 x 5¾"	1 ea
e.	10021 Square Platter 10 x 9¾"	1 ea
f.	10022 Square Platter 11¼ x 11½"	1 ea
g.	10023 Square Platter 15 x 14½"	1 ea



Each item features the same textures and tones in unique combinations





STRAIGHT SIDED RAMEKINS & BOWLS

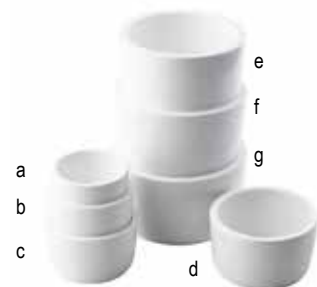
New Straight Sided Ramekins and Bowls in white come in a range of sizes, to provide versatility for your service. Ideal for serving side dishes, dips, sauces, dressings or desserts. Ramekins nest together for easy storage!

- Natural white “porcelain” color is neutral to match any décor
- Durable melamine construction
- Safe for temperatures up to 212°F
- Easy to clean, dishwasher safe



Item	Description	Capacity	Min Order
ROUND STRAIGHT SIDED RAMEKINS AND BOWLS- MELAMINE, WHITE			
a.	11407 ▶ 2" dia x 1½" Ramekin	2 oz	1 ea
b.	11408 ▶ 3 dia x 1¾" Ramekin	3 oz	1 ea
c.	11409 ▶ 3¾ dia x 1" Ramekin	4 oz	1 ea
d.	11410 ▶ 3¾ dia x 2½" Ramekin	6 oz	1 ea
e.	11411 ▶ 4¾ dia x 2½" Bowl	10 oz	1 ea
f.	11412 ▶ 4¾ dia x 2¾" Bowl	12 oz	1 ea
g.	11413 ▶ 4¾ dia x 2¾" Bowl	14 oz	1 ea

Just the right size.



ACACIA COLLECTION™ SNACK & SERVING TRAYS

Bring rustic charm to your table setting with these handcrafted serving pieces. Perfect for any occasion whether you are serving a meal, snack, or beverage.

- Acacia wood construction
- Prior to using, hand wash your item and protect it with a light coating of mineral oil
- Conveniently packaged for Cash & Carry



Beautiful Acacia grain adds a touch of natural beauty

Recessed interior helps keep food in place



View a video on the benefits of our Acacia Collection™ Snack Trays!

Item #	Description	Min Order
SNACK TRAYS-ACACIA, WOOD		
a. 11522	Oblong, 9 x 5½ x ¾" (3" Handle)	1 ea
b. 11523	Oblong, 12 x 5½ x ¾" (3" Handle)	1 ea
c. 11524	Round, 8" dia x ¾" (3" Handle)	1 ea
d. 11525	Round, 10" dia x ¾" (3¾" Handle)	1 ea
SERVING TRAY & BOARDS-ACACIA, WOOD		
e. 11572 ▶	Oblong, 13¼ x 7¼ x ¾" (3¾" Handle)	1 ea
f. 11573 ▶	Oblong, 15¾ x 8½ x ¾" (4¼" Handle)	1 ea
g. 11574 ▶	Round, 12" dia x ¾" (4¾" Handle)	1 ea



Rounded handle fits comfortably in hand for easy carrying.

Handle opening allows tray to hang for storage and drying.



Now available in larger sizes!
A perfect backdrop for hors d'oeuvres, bread and cheeses, sliced pizzas or flatbreads, and other treats.





PETAL COLLECTION™ BASKETS



Our new Petal Wire Serving Baskets add a unique flair to your setting. For use as bread baskets, side servers, breakfast settings and more!

- Available in varying shapes and styles
- Black Powder Coated Metal



1



7

5



4



3

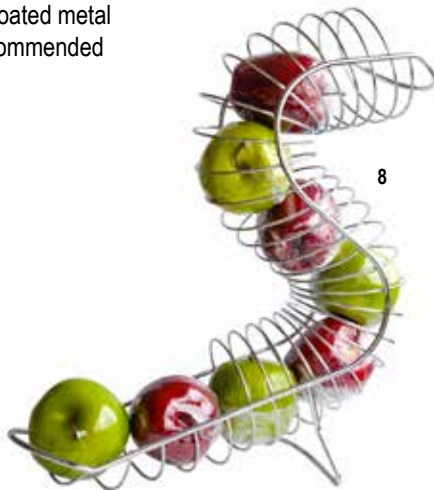


6

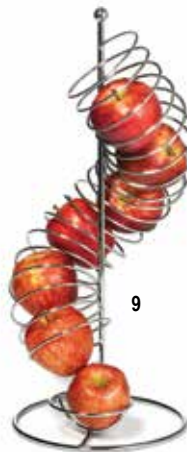
PARISIAN COLLECTION™ BASKETS

Expand your basket collection with these new Parisian Collection™ wire baskets with solid bottoms for additional versatility.

- Available in varying shapes and styles
- Black powder coated metal
- Hand wash recommended



8



9

Maximum display
Minimal footprint

DELTA COLLECTION™ BASKETS

Our new Delta Collection™ modernizes your serving presentation. Providing an elegant and eye-catching way to serve bread, sides or display fruit and veggies.

- Available in (3) sizes: 6, 8, and 10" diameter
- Constructed of black powder coated steel



FRUIT BASKETS

Save space and keep fruit organized on your buffet line, while bringing a touch of the unusual to your healthy fruit display with these fun metal baskets.

1 PETAL COLLECTION™ BASKETS

#10537
Rectangular, 9 x 6 x 2½"

2 PETAL COLLECTION™ BASKETS

#10534
Round, 6" dia x 2¼"

3 PARISIAN COLLECTION™ BASKETS

#10820
Round, 6" dia x 2¼"

4 PARISIAN COLLECTION™ BASKETS

#10821
Round, 8" dia x 2½"

5 DELTA COLLECTION™ BASKETS

#10462
Round, 6" dia x 2"

6 DELTA COLLECTION™ BASKETS

#10463
Round, 8" dia x 2"

7 DELTA COLLECTION™ BASKET

#10464
Round, 10" dia x 2"

8 CURVED FRUIT BASKET

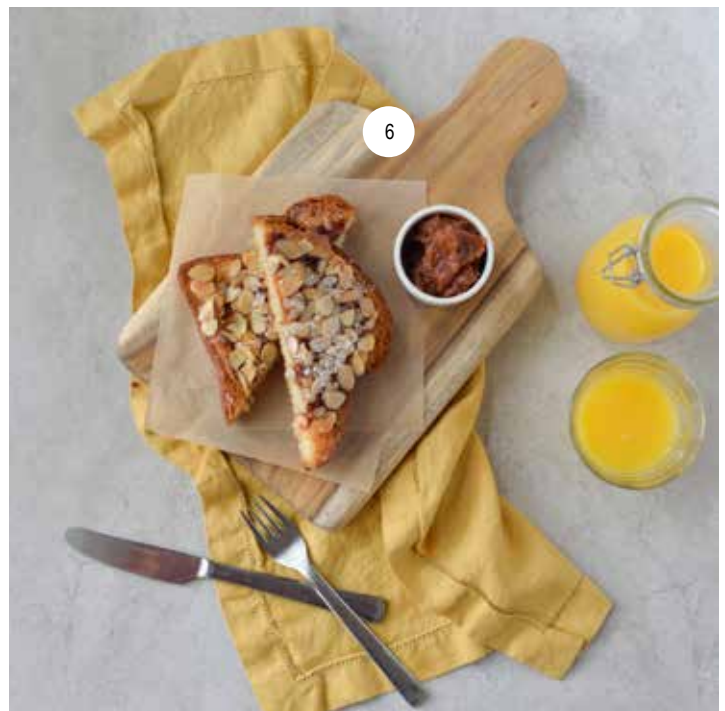
#FC1649
14 x 6¼ x 18"
(Max fruit dia 4¼")

9 SPIRAL FRUIT BASKET

#FSP1507
9 x 9 x 18½"
(Max fruit dia 4¼")



breakfast is
served



1 ROUND ENAMELWARE PLATE
#80018-8" dia

2 ENAMELWARE SERVING TRAY
#10161-16 x 11½ x 1½"

3 ROUND ENAMELWARE PLATE
#10163-8" dia

4 ROUND ENAMELWARE PLATE
#80019-10¼" dia

5 GLASS SYRUP DISPENSER
#1370-8 oz

6 ACACIA SERVING BREAD BOARD
#10508-13¾ x 7¾"

what's going on today's table



MOISTURE PROOF SHAKERS



Lids snap shut for more sanitized cleaning



8



Flip top lid features perforated holes on one side and large opening for spoon measurements on the other



CURVED MENU HOLDERS



Ideal for displaying menus and policies with less patron contact



9

10



11

Weighted flip cap pourer keeps liquids and customers safe.

7



1 BEEHIVE™ SYRUP DISPENSER
#BH7
6 oz

2 BEEHIVE™ SALT & PEPPER
#BH2
2 oz

3 S&P SHAKER RACK
#SPRR

4 POURER W/ POUR SPOUT
#HBH860
12 oz

5 POURER W/ SIDE FLAP
#BH857
12 oz

6 SHAKERS WITH MOISTURE PROOF TOPS
#H2MPW - Salt
#H2MPBL - Pepper
2 oz ea

7 CLEAR GLASS VINEGAR / OIL BOTTLE W/ WEIGHTED FLIP CAP POURER (597P)
#10379
17½ oz

8 SHAKERS WITH FLIPTOPS
#10328 - Red
6 oz Glass Bottle
#10329 - Black
6 oz Plastic Bottle

9 CURVED ACRYLIC MENU HOLDER
#AS57
5½ x 8½ x 4"
(Fits a 5½ x 8½ Sheet)

10 CURVED ACRYLIC MENU HOLDER
#AS811
11¼ x 8½ x 4½"
(Fits a 8½ x 11 Sheet)

11 CURVED ACRYLIC MENU HOLDER
#AS46
4 x 4½ x 7"
(Fits a 4 x 6" Sheet)

12 SQUARE GLASS SHAKERS
#154S&P
2 oz ea



12

SIDE SERVERS

Stainless Steel Side Servers are perfect for portion controlled sides. Create a casual dining experience—serving your sides such as potatoes, vegetables, and mac and cheese.

- Great for indoor or outdoor service
- Stainless Steel construction
- Easy to clean, dishwasher safe



4



1-3

1-3 SIDE SERVERS

- #11435-3¼" dia x 1¼", 7½ oz
- #11436-3½" dia x 1¼", 10 oz
- #11437-3¾" dia. x 3", 12 oz (4" handles)

VERTIGO COLLECTION™ SERVERS

- Serve up appetizers, sides or shareable dishes with these stylish serving baskets



6

For use with paper or fabric liners

Holds 3 oz plain ramekins

6 BLACK POWDER COATED STEEL SERVER

- #ACR57-5 x 7" Server, Includes (1) Black Ramekin (RAM3BK)

SNACK BOWLS/CONE SERVERS

- Serve your starters in style with these Stainless Steel options



5

4 SNACK BOWL W/BRUSHED S/S FINISH

- #AC885S-3¾" dia x 3¾", 14 oz

5 CONE SERVER W/BRUSHED S/S FINISH

- #R57-4½" dia x 6¾", 17½ oz



7 / 8

7 ONION RING TOWER

- #10460-4 x 4 x 7", S/S

8 ROUND MELAMINE RAMEKIN

- #RAM3BK-3 oz
- See our catalog for additional colors



9 / 10

9 PRETZEL TOWER

- #10461-6 x 6 x 12", S/S

10 ROUND S/S RAMEKIN

- #5072-4 oz
- *5063 (shown right) also fits this tower

SERVING TOWERS

Add a unique spin to serving gourmet sliders, onion rings and pretzels with our new Serving Towers. Constructed of durable Stainless Steel (wire or solid brushed finish). Pretzel and Onion Ring Tower includes ramekin holders that hold our 3 and 4 ounce ramekins (melamine or Stainless Steel—ramekins not included).

- Perfect for gastro pubs, diners and fast-casual burger & BBQ
- Towers add height and character to your presentation and saves valuable table space
- Easy to clean, dishwasher safe





INDUSTRIAL COLLECTION™

Upgrade your buffet or serving presentation with TableCraft's Industrial Collection™. Raw and refined with quality construction of mixed materials to add unique, custom designs and industrial style to your décor. Natural Acacia wood provides warm, earthy texture, while metal piping and rivets add modern, mechanical elements. Perfect for dressing up your buffet or serving meat and cheese boards, appetizers, entrees and desserts.

Item	Description	Min Order/ Case Pack
ACACIA WOOD WITH METAL BANDING		
1.	10074 Cutlery Holder, 5¼ x 5¼ x 6"	1 ea / 4 ea
2.	10075 Adjustable Cutlery Holder Rack, 11¼ x 12¼ x 3¼", Holds 4 Cutlery Holders (10074) sold separately	1 ea / 6 ea
3.	10076 Rectangular Paddle, 8¼ x 9½", 14" L w/ Handle	1 ea / 6 ea
4.	10077 Rectangular Paddle, 7½ x 12½", 17" L w/ Handle	1 ea / 6 ea
5.	10078 Rectangular Paddle, 8½ x 15½", 20" L w/ Handle	1 ea / 6 ea
6.	10079 Round Paddle, 10" dia x 14¾" L w/ Handle	1 ea / 6 ea
7.	10080 Round Paddle, 12" dia x 16¾" L w/ Handle	1 ea / 6 ea
8.	10081 Round Paddle, 14" dia x 18¾" L w/ Handle	1 ea / 6 ea
9.	10086 Rotating Cake Stand, 13" dia w/ Adjustable Height from 6¾" to 8¾"	1 ea / 3 ea
BEVERAGE DISPENSER—GLASS		
10.	10090 Glass Beverage Dispenser, 2 gal, Includes Ice Core & Infuser, Chalkboard Necklace	1 ea
DISPENSER BASE—BLACK POWDER COATED METAL		
11.	10262 Beverage Dispenser Base, Fits 10090	1 ea

Channel for use with domes

Cutlery Holder Rack sits flat or can be adjusted to a 15° angle



Leveling feet

Rotating Cake Stand adjusts from 6¾" to 8¾" high to add dimension to service

Collection coordinates well with single-serve bamboo accessories, eco-friendly straws see our catalog for further details



6 / 7 / 8

Paddle sizes range from individual to family-style serving



3 / 4 / 5



11

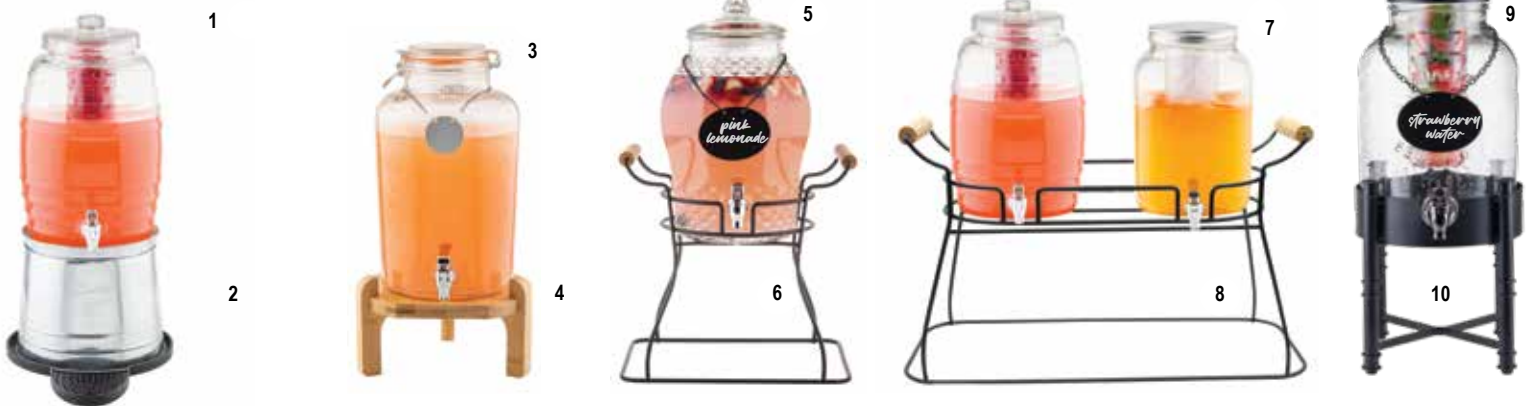
Beverage Dispenser Base compliments the industrial styling of the Beverage Dispenser (10090). Base can also be used for the BDG2000 Glass Beverage Dispenser

elevate your beverage service



BEVERAGE DISPENSERS CLEAR GLASS & STANDS

Choose from a variety of styles: Each dispenser brings character and charm to your drink station. All include a chalkboard necklace for labeling your drinks. Plus, we offer an assortment of stands to help your dispensers stand out in a crowd!



**1 BEEHIVE COLLECTION™
DISPENSER**
#BDG1000
9 x 10¾ x 14½"
2½ Gal

**2 ROUND
BEVERAGE TUB**
#BDGTUB
9" x 9" x 7¼"
Fits BDG1000, BDG2000,
BDG3000, and 10699,
or any dispenser with a
base diameter 7¼" or less

**3 RUSTIC COUNTRY™
RESEALABLE DISPENSER**
#BDG2000
8¼ x 10½ x 14"
2½ Gal

4 BAMBOO STAND
#10755
10" dia x 5¾"
\$17.00 ea
Fits BDG1000, BDG2000,
BDG3000, 10090, 10699,
or any dispensers with a
base diameter of 8¾" or less
*Also in Black Pine (10756)
or Acacia (10757)

**5 DECORATIVE GLASS
DISPENSER**
#10699
8½ x 10¼ x 14½"
2 Gal

**6 SINGLE WIRE GLASS
DISPENSER RACK**
#BDG1
Black Powder Coated,
(8½" faucet clearance)
Fits BDG1000, BDG2000,
BDG3000, 10090 and 10699)

**7 MASON JAR
DISPENSER**
#BDG3000
7¾ x 10¼ x 12½"
2 Gal

**8 DOUBLE WIRE
DISPENSER RACK**
#BDGR2
Black Powder Coated,
(8½" faucet clearance)
Fits BDG1000, BDG2000,
BDG3000, 10090 and 10699)

**9 INDUSTRIALCOLLECTION™
DISPENSER**
#10090
8 x 10 x 12¾"
2 Gal

**10 INDUSTRIALCOLLECTION™
DISPENSER RACK**
#BDG3000
Black Powder Coated Steel,
Fits 10090 and BDG2000

infuse

We have more serving options and opportunities from chilled to flavored beverages in our Upscale, Silhouette™ and Stackable plastic beverage dispensers. Assorted styles available in multiple capacities for small to large gatherings.

UPSCALE BEVERAGE DISPENSERS

Serve bulk beverages with our Upscale Beverage Dispensers. Each dispenser features a Tritan® reservoir with brushed Stainless Steel lid, base and removable Stainless Steel ice core and infuser tube. Available in multiple capacities.



1
An update to the traditional beverage dispenser with a new modern straight wall design

2
6 3/4" Faucet clearance



* 
#85 Beverage Dispenser shown with #10626 touchless faucet (sold separately)



3

TOUCHLESS DISPENSING

With social distancing and food safety concerns being a priority in every aspect of everyday life. Our #10626 touchless faucet (sold separately) fits most of our plastic or glass dispensers to reduce hand contact.

SILHOUETTE™ AND SLIMLINE

STACKABLE



4 Stackable Plastic Dispenser with Infuser



5 Two-Tiered Stackable Beverage Dispenser

Stack & Serve two beverages at once

Use two for multi-beverage options

Use one for smaller service

Includes base to elevate



7
Keep counters and tabletops clean during and after dispensing

6
Sleek design holds up to 3 1/2 gallons within a small footprint



8
Slimline Dispensers' compact design saves valuable counter space



1 **UPSCALE BEVERAGE DISPENSERS**
#10450 - 2 1/2 Gal
9 3/4 x 12 1/2 x 19 3/4"
#*10451 - 4 1/2 Gal
11 x 13 1/2 x 23 3/4"

2 **UPSCALE TRITAN® AND STAINLESS STEEL DISPENSERS**
#85 - 5 Gal (shown)
12 1/4 x 13 3/4 x 24 1/2"
*Add'l sizes in catalog

3 **UNIVERSAL TOUCHLESS FAUCET**
#10626
(sold separately)

4 **STACKABLE BEVERAGE DISPENSERS**
#BAD1500
1 1/2 Gal
9 1/2 x 10 1/2 x 13 1/2"

5 **TWO-TIERED STACKABLE BEVERAGE DISPENSER**
#10960
(2) 1 Gal
12 1/4 x 9 3/4 x 15"

6 **SILHOUETTE™ TRITAN® AND STAINLESS STEEL DISPENSERS**
#N175
3 1/2 Gal, Ice Core
11 1/4 x 12 3/4 x 23 3/4"

7 **DRIP TRAY**
#10CSBK
Fits base of 75, 85 and N175 beverage dispensers
*add'l trays in catalog

8 **DOUBLE BEVERAGE DISPENSER**
#TW33DP
(2) 3 Gal
18 5/8 x 15 3/4 x 20 5/8"
Almond (shown)



Gravity pour lid filters infused beverage out; keeps fruit in



CARAFES

Great single service options



PITCHERS



Lid features free flow and ice guard

ECONOMY SERVERS

• Featuring 3-Way Sanitary Lid



RESEALABLE SERVERS

Break-resistant carafe with a snap tight lid seals to protect from contamination. Also great for dispensing dressings and syrups (see page 20).



PREMIUM SERVERS



Highly polished Stainless Steel



INFUSION PITCHERS

• Infuser for fresh herbs and fruits to add a refreshing twist to water

1 GRAVITY POURER W/ STRAINER
#10111
1 1/4 Qt

2 SWIRL CARAFE W/ STOPPER
#10110
1 1/2 Qt

3 HONEYCOMB CARAFE W/LID
#11800
34 oz

4 RESEALABLE SERVERS W/ LIDS
#10715 - 11 oz
#10716 - 19 oz
#10717 - 36 oz

5 INFUSION PITCHER W/ LID
#PP322FIN
SAN Plastic
2 Qt

6 ICE CORE PITCHER
#319
2 Qt

7 PITCHER
#364
7 1/4 x 10 1/4 x 12 1/2"
SAN Plastic
60 oz

8 PITCHER W/ LID
#PP321
SAN Plastic
2 Qt

9 ECONOMY SERVERS
#144GRT
Granite, Black Lid
2 1/2 Qt

10 ECONOMY SERVERS
#144W
White, Blue Lid
2 1/2 Qt

11 PREMIUM SERVERS
#202
Pitcher
2 Qt

12 PREMIUM SERVERS
#300
Pitcher w/Ice Guard
2 Qt



rise to the occasion

Our crate risers bring height and attraction to your displays. Each crate style features one chalkboard panel for custom labeling and decorating. Crates nest together for storage when not in use.



Distressed Wood:
Small 12 $\frac{1}{2}$ x 8 $\frac{1}{4}$ x 6",
Medium 14 $\frac{1}{2}$ x 9 $\frac{1}{8}$ x 6 $\frac{1}{4}$ ",
Large 16 $\frac{1}{2}$ x 11 $\frac{1}{4}$ x 7 $\frac{1}{2}$ "

CRATE RISERS

Natural or Farmhouse™ styles:
Small 15 x 10 x 7 $\frac{1}{2}$ "
Medium 16 $\frac{1}{8}$ x 11 $\frac{1}{4}$ x 9 $\frac{1}{4}$ "
Large 19 $\frac{1}{4}$ x 13 $\frac{1}{2}$ x 10 $\frac{1}{2}$ "

CASCADE RISERS™

Can be nested together or fanned apart.
Set of 3: Small (17 $\frac{1}{4}$ x 7 $\frac{1}{8}$ x 4 $\frac{1}{4}$),
Medium (19 $\frac{1}{2}$ x 7 $\frac{1}{8}$ x 6"),
Large (22 x 7 $\frac{1}{8}$ x 7")



1 CRATE SET - NATURAL
#RCBCRATE1

2 CRATE SET - FARMHOUSE™
#HFCSET3

3 CRATE SET - DISTRESSED WOOD
#RCBCRATE2

4 CASCADE RISERS - ACACIA
#RACA300

5 CASCADE RISERS - BAMBOO
#RBAM300

6 CASCADE RISERS - BLACK
#RBK300



GASTRONORM DISPLAY CRATES

High quality designs that bring a rustic, yet contemporary, feel to your serving presentation

store. display. serve.

Handles for convenient transporting

Designed to fit full or half size food pans

Solid wood construction and reinforced corners

5



GASTRONORM SERVING & DISPLAY TRAYS

- These trays bring a refined rustic feel to your serving presentation
- Features solid plank bottom and handles for convenient use
- Full size crate fits standard 12 x 18" placemats



6

1 WHITE PAINTED WOOD CRATE (FULL)

#CRATE11W
20¾ x 12¾ x 2¾"

2 WHITE PAINTED WOOD CRATE (HALF)

#CRATE12W
12¾ x 10¾ x 2¾"

3 WHITE PAINTED WOOD CRATE (THIRD)

#CRATE13W
12¾ x 6¾ x 2¾"

4 WHITE PAINTED WOOD CRATE (FOURTH)

#CRATE14W
10¾ x 6¾ x 2¾"

5 ACACIA CRATE (HALF)

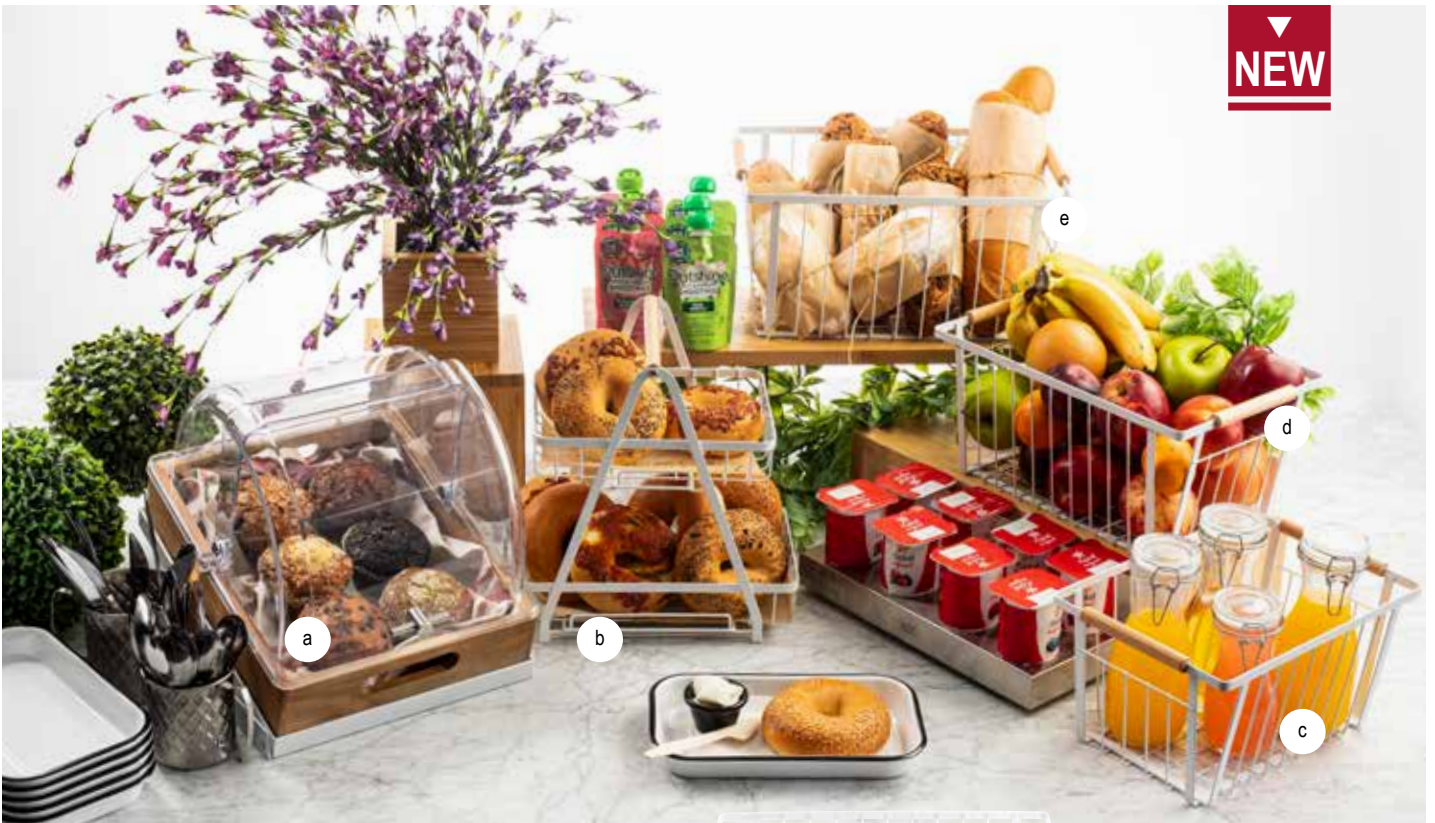
#CRATE124
12¾ x 10¾ x 4¼"

6 ACACIA WOOD CRATE (FULL)

#CRATESB11
20¾ x 12¾ x 2¾"

*Add'l sizes and finishes in catalog

NEW



HALF SIZE DOME COVER

Dome displays keep your food covered and fresh on the serving line and this half dome cover will work perfectly over our half size crates.

- Made of polycarbonate plastic
- Dishwasher safe
- Not microwave or oven safe



a



Nests for easy storage

c-d

2-TIER & STORAGE BASKETS

Upgrade your buffet with these white baskets with wood handles. Great for grab & go breakfast items, baked goods, and fruits.

- White powder coated steel with wood handles
- 2-Tier Basket Display requires assembly; instructions will be included
- White Storage Baskets nest inside each other
- Hand wash only



Item	Description	Min Order
HALF SIZE DOME COVER-POLYCARBONATE (PC)		
a.	11688 ▶ Rectangular Cover, 13¼ x 10½ x 7½" (Fits Half Size Crates)	1 ea
DISPLAY & STORAGE BASKETS-POWDER COATED STEEL WITH WOOD HANDLES, WHITE		
b.	11784 ▶ 2-Tier Basket Display, 11½ x 9½ x 12¼"	1 ea
c.	11785 ▶ Storage Basket, 12 x 8 x 6"	1 ea
d.	11786 ▶ Storage Basket, 13½ x 9 x 6½"	1 ea
e.	11787 ▶ Storage Basket, 14½ x 10¼ x 7¼"	1 ea

Display and serve with an elevated design.



b

Works with our Half and Full Size Gastronorm Crates. Shown here with CRATE11 (top) and CRATE114 (bottom), see our catalog, for our full assortment.



a

Works with our Half and Full Size Cooling Plates, shown here with CW60101, see page 32.



GRAB & GO TWO-TIERED FRAMES

Display and merchandise your baked goods, fruits, or grab & go prepacked foods with these new frames that fit our full-size and half-size crates perfectly.

- Black powder coated steel
- See our collection of crates that pair with these frames
- Ships flat; lock & channel design for quick, easy assembly—assembly instructions are included



Item	Description	Min Order
	GRAB & GO TWO-TIERED FRAME—POWDER COATED (OVER STEEL)	
11622 ▶	Black, 15¼ x 15¼ x 13" Fits Gastronorm Half Size Wood Crates	1 ea
a. 11795 ▶	White, 15¼ x 15¼ x 13" Fits Gastronorm Half Size Wood Crates	1 ea
b. 11623 ▶	Black, 23½ x 17¾ x 13" Fits Gastronorm Full Size Wood Crates	1 ea
c. 11796 ▶	White, 23½ x 17¾ x 13" Fits Gastronorm Full Size Wood Crates	1 ea

Lip helps keep crates in place.



c

Keep products easily accessible with this space-efficient design.

...and go above and beyond
more grab-n-go, display and storage solutions.



STACKABLE HANGING BASKETS

Versatile baskets to stock, stack and store



1



TWO-TIERED RISER FRAME

Shown with our Gastronorm Crates*

(2 ea) CRATE12 Half Size Crate (2 ea) CRATE124 Half Size Crate

*crates not included, see catalog for all crate color and size options

2

TWO-TIERED DISPLAY STANDS

Great for displaying products vertically in a small footprint

REMOVABLE CHALKBOARD



3



5

CAKE DOMES

Keep baked goods and sandwiches safely displayed, and undercover. This SAN Plastic cake dome fits the channel on Frostone Slate tray (MGC13) or the Industrial Collection™ Rotating Cake Stand #PCD1 12" dia x 5 3/4" h

STAINLESS STEEL RAMEKINS WITH LIDS

Ideal for pre-portioning and storing condiments.



4

1 STACKABLE HANGING BASKETS
#240000
15 1/2 x 9 1/2 x 8 3/4"

#240001
16 1/2 x 12 1/4 x 9 1/4"

2 TWO-TIERED DISPLAY STANDS
#10719 (round)
11 3/4 x 11 3/8 x 15"

#10718 (rectangle)
17 1/2 x 8" x 18"

3 TWO TIERED CRATE RISER
#11000 [display only]*
21 1/2 x 13 1/2 x 22 1/4"
* All crates, accessories are sold separately

4 STAINLESS STEEL RAMEKINS W/LIDS
#H5069 - 2 1/2 oz
#10769 - 3 oz
#10773 - 5 oz

5 CAKE DOME
#PCD1
12" dia x 5 3/4" h

Forge Ahead



RECTANGULAR BASKET
11696
20 3/4" x 12 3/4" x 4 1/4"



ROUND BASKET
11692
8" dia x 2 3/4"



ROUND BASKET
11693
10 1/4" dia x 4"



SQUEEZE BOTTLE CADDY
11846
Holds (4) 63 mm bottles
2 3/4" dia bottles (7 1/4" x 7" x 6 3/4")

(6) Bottle Caddy also available
11847
See **page 247** in our catalog for
our complete Forge Collection™

NEW



RECTANGULAR BASKET
11695
12 3/4" x 10 1/2" x 4 1/4"



RECTANGULAR BASKET
11694
10 1/4" x 6 1/2" x 3 1/4"

prep
or serve

View our video on the Invertatop line of squeeze bottles:



INVERTATOP™ 53MM & 63MM SQUEEZE BOTTLES

- Easy-clean ValveTop™ works with fast-flow and slow-flow liquids, sauces and condiments; also allows for small particles (up to 1/8")
- Fill your bottle from the top and dispense from the bottom; ideal for busy food areas and minimizes waste
- Colored end caps (sold separately)



Great for high viscosity, slow flowing condiments such as barbeque, mayonnaise and tartar!



INVERTATOP™ 53MM OR 63MM COLORED END CAPS

- Colored end caps provide easy identification



1 UNIVERSAL VALVETOP™
#16SV
16 oz LDPE Bottle
53mm HDPE Cap

2 UNIVERSAL VALVETOP™
#24SV
24 oz LDPE Bottle
63mm HDPE Cap

3 INVERTATOP™
53MM COLOR CAPS
#53FCAPA
53mm, Assorted
(Includes 2 of each color)

4 INVERTATOP™
63MM COLOR CAPS
#63FCAPA
63mm, Assorted
(Includes 2 of each color)

squeeze to please

CUSTOM IMPRINTING available, 3,024 piece minimum. Contact your TableCraft sales rep for further information.

WIDEMOUTH™ 53MM AND 63MM SQUEEZE BOTTLES

- Ideal option for fast preparation and service areas
- Features standard cone tip tops (2.8mm) opening
- Also fits wide tip tops (5mm) opening (sold separately)



Large opening for easy filling and cleaning



WIDEMOUTH™ HIGH DENSITY 53MM AND 63MM SQUEEZE BOTTLES

Great for use with low temp squeeze bottle warmers



3



Ketchup



Mustard

Clear

SAFERFOOD SOLUTIONS™ WIDEMOUTH™ 63MM SQUEEZE BOTTLE

- Suitable for all sauces, nozzle can be cut to size



4

Unique wide threads offer an easy-clean solution

DUALWAY™ WIDEMOUTH™ 63MM SQUEEZE BOTTLES

- Innovative bottle uses leak resistant PerfectFlex™ for rapid food preparation



5

Fill your bottle from the bottom and dispense from the top

**1 WIDEMOUTH™
53MM SQUEEZE BOTTLES**
LDPE BOTTLE,
53MM POLYPROPYLENE TOP
#11253K - Ketchup, 8 oz
#11253M - Mustard, 8 oz
#10853C - Clear, 8 oz

**2 WIDEMOUTH™
63MM SQUEEZE BOTTLES**
LDPE BOTTLE,
63MM POLYPROPYLENE TOP
#3263C - Clear, 32 oz

**3 WIDEMOUTH™
63MM SQUEEZE BOTTLES**
LDPE BOTTLE,
63MM POLYPROPYLENE TOP
#23363C - Clear, 32 oz

**4 SAFERFOOD SOLUTIONS™
WIDEMOUTH™
63MM SQUEEZE BOTTLE
WITH CONE TIP**
#N20C - Clear, 20 oz

**5 DUALWAY™ WIDEMOUTH™
63MM SQUEEZE BOTTLE**
#12463C3F - Clear, 24 oz

OPTION™ DISPENSER

- Prep, store & serve salad dressings, juices or condiments
- Available in 32, 48 and 64 oz



Our Option™ Dispensers—Polypropylene with ABS top allow you to prep, store, and serve juices, dressings, batters, oils, and mixes. Plus, assorted color caps can be used for easy identification.

NSF® OPTION™ DISPENSER

- Prep, store & serve salad dressings, juices or condiments
- Easy to read labeled ergonomic handles and clear bottles make it simple to identify contents
- Slider prevents drips, keeping countertops clean
- Holding tray available (see page 7), keeping bottles organized in a cold well



Set of 10 tags (sold separately)

SALAD DRESSING DISPENSER SETS

- Ideal for salad bars
- Same dimensions as full size food pan



48 oz Polypropylene

Set includes (6) dispensers with black plastic tops, (1) tray, (10) different salad dressing tags: Bleu Cheese, Fat Free Ranch, Fat Free Italian, French, House, Italian, Ranch, Russian, Thousand Island and Vinaigrette

Dispensers are also a perfect solution for serving juices



Available in 32 oz, 48 oz and 64 oz capacities in individual or assorted sets (1): Gray, Beige, Maroon, Orange, Red & Yellow

RESEALABLE SERVERS

Break-resistant and snap tight lid seals makes these carafes ideal for salad dressings and toppings.



Lid snaps closed for a tight seal

Versatile, break-resistant and elegant



3-hole template holds both 11 oz and 19 carafes or 32 oz squeeze bottles (sold separately). Template fits standard 1/3 Size Food Pans (not included).

1 OPTION DISPENSERS
#PP32R
4½ x 3¾ x 7¼"
32 oz

2 OPTION DISPENSERS
#PP48A
5¼ x 4½ x 8"
48 oz

3 NSF® OPTION™ DISPENSERS
#N48
5¼ x 4½ x 8"
48 oz

4 TAGS FOR NSF OPTION DISPENSERS
#CN4812
Set of 10 tags

5 SALAD DRESSING DISPENSER SET
#483
Maroon Top Set
w/tray and tags
48 oz

6 RESEALABLE SERVERS W/LIDS
#10715 - 11 oz
#10716 - 19 oz
#10717 - 36 oz

7 3-HOLE TEMPLATE FOR RESEALABLE SERVERS*
#10817
Template Only*



b

TRAY STANDS

- Rubber slip-proof top rings
- Tall tray stand reduces back strain and fatigue

Rubber non-slip rings to keep straps & tray in place



Item #	Description	Min Order/Case Pack
TRAY STANDS—WOOD BLACK OR MAHOGANY FINISH		
	Mahogany, 17 x 16 x 38"	1 ea
b. 21	Mahogany, 17 x 16 x 32½"	1 ea
10399	Black, 16¾ x 16½ x 32"	1 ea
c. 11520	Black, 17 x 16 x 38"	1 ea
31	Mahogany, Spindle Design, 17¾ x 16½ x 31"	1 ea
d. 11521	Black, Spindle Design, 17¾ x 16½ x 31"	1 ea
TRAY STANDS—CHROME PLATED OR BLACK POWDER COATED METAL		
23	Single Bar, Chrome Plated, 17¼ x 17¼ x 29¾"	1 ea
e. 24	Double Bar, Chrome Plated, 18¼ x 16½ x 31¾"	1 ea
23BK	Single Bar, Black, 17¼ x 17¼ x 29¾"	1 ea
24BK	Double Bar, Black, 18¼ x 16½ x 31¾"	1 ea



d



e

Heavy tubular construction

f



4

Permanent passive restraint added to the front of the chair and the height of the back rest have been increased to keep child more securely in their seat.

New ASTM F404-18 compliant warning labels can be found on the front and back of the back rest.



5

The gaps of side panels between arm rests and seat have been reduced to prevent arms and legs from getting lodged.



6



7

Increased stance and extended base bars added for stability and reduced risk of tipping

HIGH CHAIRS

- ASTM404-18 Compliant
- Warning label with certification and ASTM number
- Permanent passive restraint added to the front of the chair
- Reduced all gaps in side panels and seat back to reduce the risk of fall through
- Increased stance for added stability and reduced risk of tipping
- Durable construction with reinforced fittings
- Available pre-assembled or shipped flat
- Assembled unit is subject to dimensional weight charges, UPS ships oversize

4 BLACK WOOD HIGH CHAIR
#10625-20¾ x 23 x 29½"

5 MAHOGANY WOOD HIGH CHAIR
#6464162-20¾ x 23 x 29½"

6 WALNUT WOOD HIGH CHAIR
#6666163-20¾ x 23 x 29½"

7 NATURAL WOOD HIGH CHAIR
#6565104-20¾ x 23 x 29½"

* Unassembled chairs also available and replacement straps, see catalog for details.

QUICK VIEW CHAFERS GENERAL FEATURES

Our highly-polished Stainless Steel Quick View Chafers will elevate any catering or buffet line. Windows allow guests to see contents prior to opening the chafers. Steam vents reduce condensation. Slow closing lids reduce the noise that often comes with opening and closing during service. Lids also include safety features for operators to remove and replace food pan inserts easily and safely without risk of steam burns.

- Chafers hold temperature evenly
- Steam pan and water basin included



Slow closing lid with improved hinge design



Hinge design has an integrated stop to keep lid open for serving



Hinge is easy to replace (no tools needed)



Steam Pan Lifter protects operator from steam burns, making food rotation easier



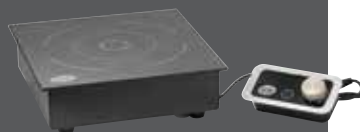
Intuitive integrated lip to assist in manually removing steam pans



Integrated spoon rest for seamless serving, keeping your buffet more sanitary



PORTABLE INDUCTION COOKTOP
#CW40195
fits up to 10 3/4" dia
compatible cookware base



**PORTABLE INDUCTION
DROP-IN COOKTOP**
#CW40196
fits up to 12" dia
compatible cookware base



**2/3 SIZE ELECTRIC
CHAFER w/ STAND**
#CW40162
16 x 16 x 6"

QUICK VIEW [ELECTRIC] CHAFERS

For complete selection of electric, fuel and induction Chafers & Servers see our comprehensive Buffet & Catering section in our catalog.

QUICK VIEW [INDUCTION] CHAFERS

The induction cooktop heats and holds temperature evenly without an open flame or need to replace fuel. Includes steam pan and water basin.



2/3 SIZE SERVER
#CW40161
22 7/8" x 17 1/4" x 8 1/4"
(Fits CW40175STAND)

QUICK VIEW [FUEL] CHAFERS

Designed to allow for longer, hot-holding. The unique quick view window reducing unnecessary wear on the lid hinge and slow closing lid reduces the noise made by lifting and replacing lid. See additional features to right.



ROUND SERVER w/ STAND
#CW40177
17 1/4" x 19 1/2" x 12 1/4"

ROLL TOP [FUEL] CHAFERS

For more traditional buffet and banquet applications, our roll top chafers offer same features as our quick view counterparts. Slow closing lid for reduced noise, properly placed fuel holders for canisters to generate steam and promote even heat distribution.



ROUND SERVER
#CW40168
13 1/2" dia x 17 1/4"

KEEP YOUR FOOD PRODUCTS COOL... WITH OUR COOL DISPLAY PRODUCTS

COOLING PLATES



Foods can stay perfectly chilled for up to 3 hours with these versatile solutions. Our cooling plates can be used separately, on stands or in a cooling base station with or without cast aluminum trays and bowls (See catalog for more options). For best results, must use pre-chilled trays and our cast aluminum bowls and trays prior to displaying.

FOOD DISPLAY TRAYS



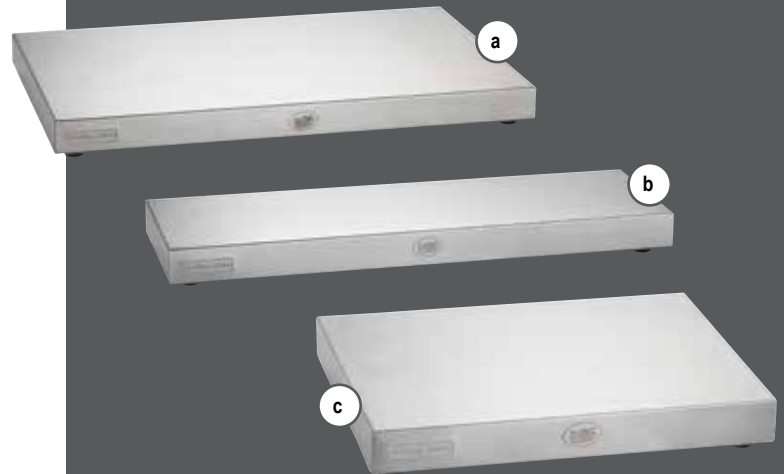
Great way to keep your presentation clean and organized. Cool trays in freezer prior to use with or without cooling plates. Available in standard gastronorm size and more. Choose natural finish or any of our DuraCoat™ coatings.



HALF SIZE FOOD TRAY
#CW2112
12 $\frac{3}{8}$ x 10 $\frac{1}{2}$ x $\frac{3}{8}$ "



DURACOAT™
CAST COATINGS
FOR COLD FOOD HOLDING ONLY



A FULL SIZE PLATE
#CW60100
20 $\frac{1}{2}$ x 12 $\frac{3}{4}$ x 1 $\frac{1}{2}$ "

B HALF LONG SIZE PLATE
#CW60103
21 x 6 $\frac{3}{4}$ x 1 $\frac{1}{2}$ "

C HALF SIZE PLATE
#CW60101
12 $\frac{3}{4}$ x 10 $\frac{1}{2}$ x 1 $\frac{1}{2}$ "

COLD SERVERS

Portable solution for catering both on and off-site to keep food looking fresh and tasting great. Clear retractable lids for easy viewing and reduces contamination. Plastic freeze packs included.

ELEVATE THE COOLNESS LEVEL OF YOUR PRESENTATION



3-TIERED BLACK POWDER COATED HALF LONG COOLING PLATE DISPLAY
with plates included
#CW40309B
22 $\frac{1}{2}$ x 21 $\frac{1}{4}$ x 20 $\frac{3}{4}$ "

See our complete catalog for other cooling plate display options.



ROUND COLD SERVER
#CW40166
20 $\frac{1}{2}$ " dia x 13 $\frac{1}{2}$ "



FULL SIZE COLD SERVER
#CW40169,
22 $\frac{1}{2}$ x 14 $\frac{3}{4}$ x 10 $\frac{3}{4}$ "

We've got you covered

in some unexpected ways....

WRAP IT UP!

RAPID WRAP™ Film Dispenser

Great for wrapping individual fruit, baked goods, etc. Fits 12" film roll with or without box. Keeps work space clean, organized and utilizes 100% of roll.

US patent no. d781,066s

RAPID WRAP™ DISPENSER

#RWS12

16½ x 9⅞ x 9¼"

*Fits 12" film rolls (sold separately)



ANTIMICROBIAL™ SERVING UTENSILS

Textured cool-touch handles are treated to keep bacteria from spreading during communal use.
US patent no. d781,066s

AM3331BK	9 5/8" Server
AM3313BK	14" Solid Turner
AM3314BK	14" Slotted Turner
AM3706BK	6" Tongs
AM3709BK	9" Tongs
AM5301BK	Ladle, 9" handle
AM5302BK	Ladle, 9" handle
AM5303BK	Ladle, 9" handle
AM5304BK	Ladle, 9" handle
AM5306BK	Ladle, 9" handle
AM5311BK	Ladle, 11 1/2" handle
AM5312BK	Ladle, 11 1/2" handle
AM5313BK	Ladle, 11 1/2" handle
AM5314BK	Ladle, 11 1/2" handle
AM5316BK	Ladle, 11 1/2" handle
AM5333BK	Solid Spoon, 13 3/8"
AM5343BK	Solid Spoon, 14 5/8"
AM5353BK	Solid Spoon, 15"
AM5363BK	Solid Spoon, 14 1/2"
AM5334BK	Slotted Spoon, 13 3/8"
AM5344BK	Slotted Spoon, 13 3/4"
AM5354BK	Slotted Spoon, 14"
AM5364BK	Slotted Spoon, 14 1/2"



SILICONE & STAINLESS STEEL UTENSILS

Stainless Steel core with silicone exterior construction provides a durable, flexible and scratch resistant serving utensil option!
Heat safe up to 400°F / 204°C, easy to clean and dishwasher safe. NSF listed.



Safe to use with coated cast aluminum items

Non-slip comfort grip

**1 SILICONE & STAINLESS
TONGS**
#39100 - 7" Tong
#39101 - 9" Tong
#39102 - 12" Tong

**2 SILICONE & STAINLESS
LADLES**
#10050 - 11 1/4" Serving Ladle
#10051 - 11 1/2" Serving Ladle
#10052 - 12 1/8" Serving Ladle

**3 SILICONE & STAINLESS
TURNER & SPATULAS**
#10053 - 13 3/4" Fish Turner
#10054 - 12 7/8" Slotted Spatula
#10055 - 12 7/8" Solid Spatula



Providing Solutions for over 75 Years
Every Ware. Every Day.

For over 75 years, TableCraft Products Company has been proud to bring innovation and quality products to the foodservice industry.

World Headquarters
801 Lakeside Drive
Gurnee, Illinois 60031
847.855.9000
847.855.9012 fax

Professional Bakeware
by TableCraft
11739 N US Highway 75
Willis, TX 77378
847.856.5516

Customer Service:
800.323.8321
info@tablecraft.com
www.tablecraft.com